

\$329,900 - 10822 134 Avenue, Edmonton

MLS® #E4459448

\$329,900

4 Bedroom, 2.00 Bathroom, 1,044 sqft

Single Family on 0.00 Acres

Rosslyn, Edmonton, AB

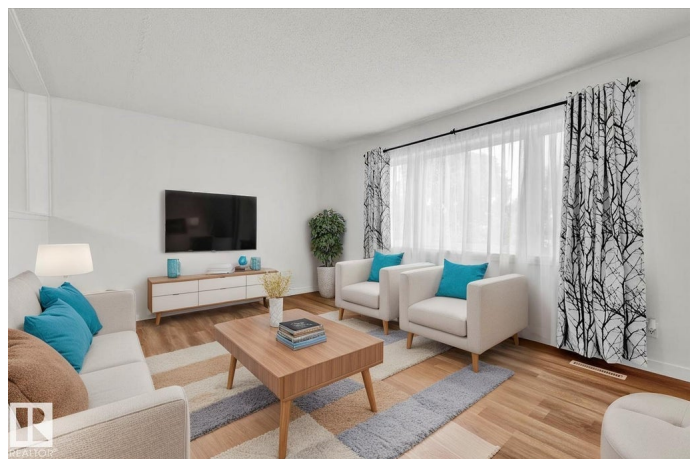
Welcome Home! Attention Everyone! Corner lot in the lovely Community of Rosslyn Edmonton. Terrific half duplex move in ready with 4 Beds 2 Bath, Detached Garage, Tons of Parking, Plenty of Updates, and so much more. Terrific opportunity for development of future suite with side entrance of the street. Fenced back yard with huge drive way for extra parking. Oversized garage leads through fenced yard. Side entrance with gate to front yard and side of home. Main floor has tons of windows and great floor plan. Large front living room, ample dining room with space for large table leads into updated kitchen. New and almost new appliances with quartz counter tops and tons of counter space and cabinets. Large window above sink. Hallway leads to fresh full bathroom. 3 Large Upper Bedrooms and 4th bedroom in basement. Side entrance with separate door leads to large partially finished basement. 3 Piece bath, roughed in plumbing. Huge Laundry utility room almost has room for another bedrooms. Laundry in basement. WOW

Built in 1962

Essential Information

MLS® # E4459448

Price \$329,900



Bedrooms	4
Bathrooms	2.00
Full Baths	2
Square Footage	1,044
Acres	0.00
Year Built	1962
Type	Single Family
Sub-Type	Half Duplex
Style	Bungalow
Status	Active

Community Information

Address	10822 134 Avenue
Area	Edmonton
Subdivision	Rosslyn
City	Edmonton
County	ALBERTA
Province	AB
Postal Code	T5E 1K1

Amenities

Amenities	See Remarks
Parking Spaces	3
Parking	Single Garage Detached

Interior

Appliances	Dishwasher-Built-In, Dryer, Microwave Hood Fan, Refrigerator, Stove-Electric, Washer, Window Coverings
Heating	Forced Air-1, Natural Gas
Stories	1
Has Basement	Yes
Basement	Full, Partially Finished

Exterior

Exterior	Wood, Vinyl
Exterior Features	Corner Lot, Fenced, Playground Nearby, Public Transportation, Schools, Shopping Nearby, See Remarks
Roof	Asphalt Shingles
Construction	Wood, Vinyl

Foundation Concrete Perimeter

Additional Information

Date Listed September 25th, 2025

Days on Market 4

Zoning Zone 01

DATA IS DEEMED RELIABLE BUT IS NOT GUARANTEED ACCURATE BY THE REALTORS® ASSOCIATION OF EDMONTON. COPYRIGHT 2025 BY THE REALTORS® ASSOCIATION OF EDMONTON. ALL RIGHTS RESERVED.Trademarks are owned or controlled by the Canadian Real Estate Association (CREA) and identify real estate professionals who are members of CREA (REALTOR®, REALTORS®) and/or the quality of services they provide (MLS®, Multiple Listing Service®)

Listing information last updated on September 28th, 2025 at 10:17pm MDT